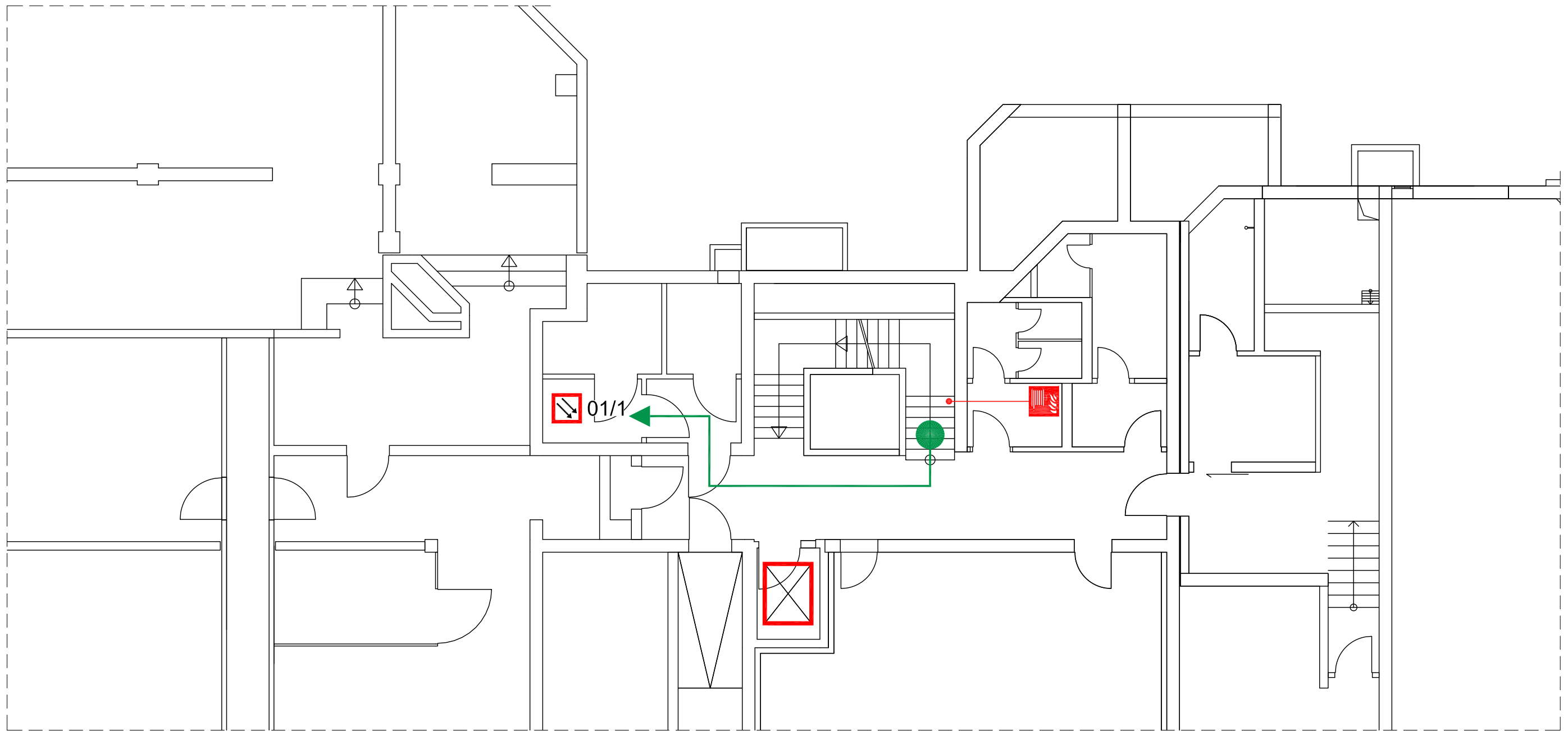






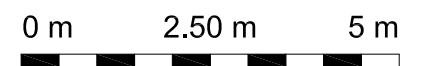
Meldergruppe	Melderart	Anzahl	Geschoss	Raum
01	Rauchmelder, optisch	1	KG	611 (BMZ)

KELLERGECHOSS



Legende

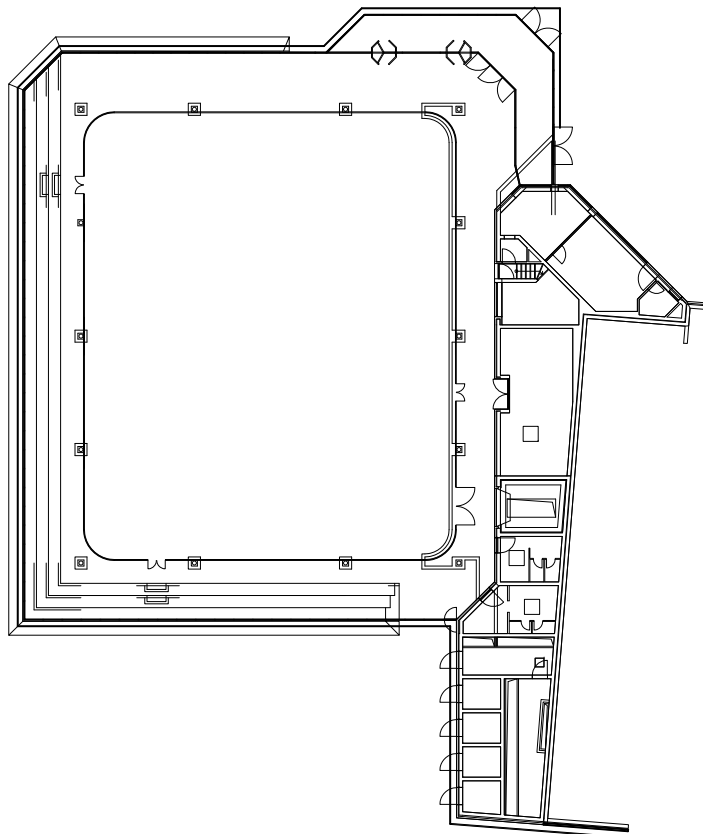
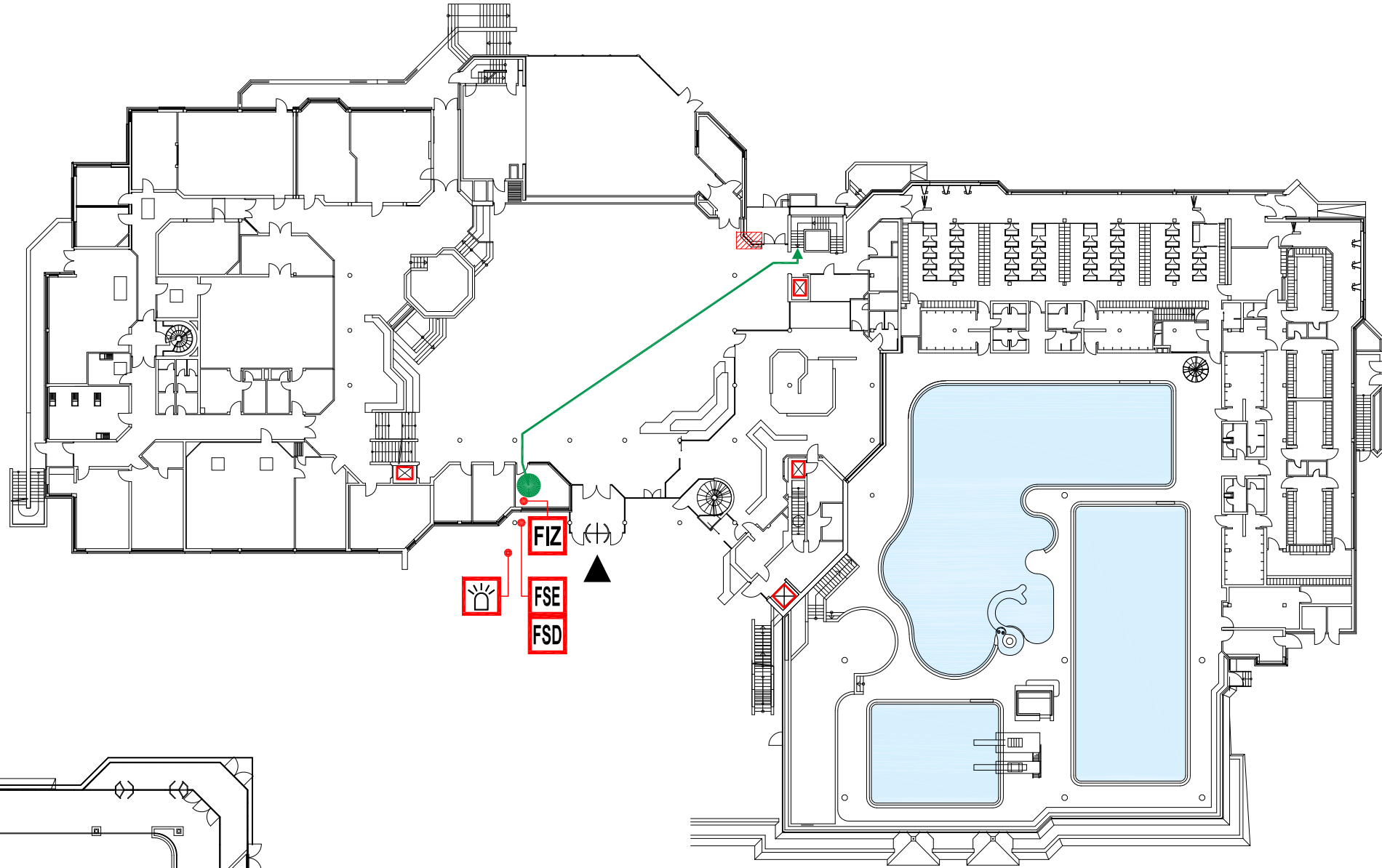
 Standort	 Rauchmelder, optisch
 Laufweg zum Melder	 Wandhydrant





Meldergruppe	Melderart	Anzahl	Geschoss	Raum
01	Rauchmelder, optisch	1	KG	611 (BMZ)


ERDGESCHOSS

0 m 10 m 20 m



- ### Legende
-  Feuerwehrhauptzugang
 -  Feuerwehr- Informations-Zentrum
 -  Feuerwehr-schlüsseldepot
 -  Freischalt-element
 -  Blitzleuchte
 -  überwachter Melderbereich
 -  Laufweg zum Melder
 -  eigener Standort

Objekt:

Ebene	Raum	TR
1. OG	240	
EG	FIZ	
KG		